



**murray river
council**

AGENDA

Extraordinary Council Meeting Tuesday, 29 April 2025

**I hereby give notice that an Extraordinary Meeting of Murray River
Council will be held on:**

Date: Tuesday, 29 April 2025

Time: 1:30 PM

**Location: Council Chambers
Moama Administration Office
52 Perricoota Road, Moama**

**Stacy Williams
Chief Executive Officer**

Order Of Business

1	OPENING MEETING	4
2	ACKNOWLEDGEMENT OF COUNTRY.....	4
3	APOLOGIES & APPLICATIONS FOR A LEAVE OF ABSENCE.....	4
4	CONFIRMATION OF MINUTES	5
	4.1 Confirmation of Minutes - Ordinary Meeting held on 25 March 2025	5
5	DISCLOSURES OF INTERESTS	19
6	REPORTS TO COUNCIL	19
	6.1 Chief Executive Officers Report and Supplementary Matters	20
	6.1.1 Adoption of Delivery Program 2025-29.....	20
	6.2 Director Corporate Services Report and Supplementary Matters	22
	Nil	
	6.3 Director Infrastructure Report and Supplementary Matters	23
	6.3.1 Recommendation for Placing the Draft Moama Flood Risk Management Study and Plan on Public Exhibition	23
	6.4 Director Planning and Environment Report and Supplementary Matters	33
	Nil	
	6.5 Director community and economic development Report and Supplementary Matters.....	33
	Nil	
	6.6 Correspondence Report.....	33
	Nil	
	6.7 Sundry Delegates Report	33
	Nil	
7	CLOSE OF MEETING	33

1 OPENING MEETING

2 ACKNOWLEDGEMENT OF COUNTRY

I acknowledge and respect the Traditional Custodians of the Lands where we stand today,
I acknowledge Elders past and present, the pioneers whose toil inspires us still;
And those who gave their lives, that we many now,
On this proud past, a vibrant future build.

3 APOLOGIES & APPLICATIONS FOR A LEAVE OF ABSENCE

4 CONFIRMATION OF MINUTES**4.1 CONFIRMATION OF MINUTES - ORDINARY MEETING HELD ON 25 MARCH 2025**

File Number: -

Author: Jan Donald, Executive Administration Officer

Authoriser: Stacy Williams, Chief Executive Officer

RECOMMENDATION

That the minutes of the Ordinary Meeting of Murray River Council held on 25 March 2025 be confirmed as a true and correct record.

DISCUSSION

Murray River Council held its Ordinary Meeting of the Council on Tuesday 25 March 2025, commencing at 1:00pm at the Council Chambers (Lower Level), Moama Administration Office, 52 Perricoota Road, Moama.

A copy of the draft minutes for the meetings are attached for ratification by the Council at this meeting.

ATTACHMENTS**1. Unconfirmed Minutes - Ordinary Meeting of Council 25 March 2025**

MURRAY RIVER COUNCIL Ordinary Council Meeting Minutes

25 March 2025

**MINUTES OF MURRAY RIVER COUNCIL
ORDINARY COUNCIL MEETING
HELD AT THE COUNCIL CHAMBERS, MOAMA ADMINISTRATION OFFICE, 52 PERRICOOTA
ROAD, MOAMA
ON TUESDAY, 25 MARCH 2025 AT 1:00 PM**

PRESENT: Cr John Harvie (Mayor), Cr Neil Gorey (Deputy Mayor), Cr Joy Allan, Cr Kylie Berryman, Cr Gen Campbell, Cr Dennis Gleeson, Cr Bianca Hurn, Cr Gary Pappin, Cr Geoff Wise

IN ATTENDANCE: Sarah Ryan (Acting Chief Executive Officer), Lindy Leyonhjelm (Executive Assistant), Stephen Fernando (Director Corporate Services), Sandra Gordon (Manager Governance & Risk), Beck Hayward (Acting Director Economic Development & Community Services), Daniel Hughes (Interim Director Infrastructure), Gary Arnold (Interim Director Planning & Environment)

1 OPENING MEETING

The Mayor held a short appropriate prayer.

2 ACKNOWLEDGEMENT OF COUNTRY

The Mayor opened the meeting with an Acknowledgement of Country.

3 APOLOGIES & APPLICATIONS FOR A LEAVE OF ABSENCE

Nil

4 CONFIRMATION OF MINUTES

4.1 CONFIRMATION OF MINUTES - ORDINARY MEETING HELD ON 25 FEBRUARY 2025

RESOLUTION 010325

Moved: Cr Dennis Gleeson

Seconded: Cr Joy Allan

That Council:

- Notes the Notice of Rescission report regarding the correction of a procedural error at the Council Meeting on the 25 February 2025 that is reflected in the Minutes.
- Adopts the minutes as a true and accurate record of the meeting.

CARRIED

Questions without notice arising from minutes of previous meeting/s

<Enter time>

5 DISCLOSURES OF INTERESTS

Cr John Harvie declared a Less Than Significant Non-Pecuniary conflict of interest in Item 9.5.2 Community Financial Assistance Program Framework in the Director Community and Economic Development Report and Supplementary Matters report.

age 1

MURRAY RIVER COUNCIL Ordinary Council Meeting Minutes**25 March 2025**

Cr Dennis Gleeson declared a Pecuniary conflict of interest in Item 11.1 Recommendation to Endorse Project Option – Barham River Estate in the Confidential Matters report.

DISCLOSURES OF INTEREST**RESOLUTION 020325**

Moved: Cr Joy Allan

Seconded: Cr Geoff Wise

That Council approve the presented Disclosures of Interest as listed above.

CARRIED**6 DEPUTATIONS****7 MAYORAL MINUTE(S)****7.1 MAYORAL MINUTE - CONSIDERATION OF MOTIONS TO BE SUBMITTED TO THE AUSTRALIAN LOCAL GOVERNMENT ASSOCIATION - NATIONAL GENERAL ASSEMBLY****MOTION**

Moved: Cr Dennis Gleeson

Seconded: Cr Gary Pappin

That Council

1. Resolve to submit the following motion to the Australian Local Government Association – National General Assembly

MOTION: That the federal government restore Financial Assistance Grants to 1 percent of Commonwealth taxation revenue by 2030 and to 1.5% of Commonwealth taxation revenue by 2035.

RESOLUTION 030325

Moved: Cr Gary Pappin

Seconded: Cr Kylie Berryman

That the Federal Government restore the Financial Assistance Grants to 1 percent of Commonwealth taxation revenue immediately and to 1.5 percent of Commonwealth taxation revenue by 2030.

THE AMENDED MOTION BECOMES THE MOTION AND RESOLUTION OF COUNCIL

CARRIED**8 REPORTS OF COMMITTEES**

Nil

9 REPORTS TO COUNCIL**9.1 CHIEF EXECUTIVE OFFICERS REPORT AND SUPPLEMENTARY MATTERS**

age 2

MURRAY RIVER COUNCIL Ordinary Council Meeting Minutes

25 March 2025

9.1.1 COMMUNITY ENGAGEMENT STRATEGY 2024

RESOLUTION 040325

Moved: Cr Gary Pappin
Seconded: Cr Gen Campbell

That Council endorse the Community Engagement Strategy 2024 for finalisation and publication, subject to minor wording amendments being incorporated to improve the clarity, noting that these amendments will not alter the intent or substance of the strategy.

CARRIED

9.1.2 REVISED PROCUREMENT POLICY - (POL-205)

RESOLUTION 050325

Moved: Cr Gen Campbell
Seconded: Cr Neil Gorey

That Council consider the detail in this report and:

- a. adopt the DRAFT Procurement Policy V3 attached to this report ('the draft Policy'); and
- b. authorise the placing of the draft Policy on public display.

CARRIED

9.1.3 DELIVERY PROGRAM 2025-29 DRAFT FOR PUBLIC CONSULTATION

RESOLUTION 060325

Moved: Cr Dennis Gleeson
Seconded: Cr Neil Gorey

That the Officer's report on Delivery Program 2025-29 Draft for Public Consultation as at 25 March 2025, be received and Council endorses the document to go on Public Exhibition for 28-days prior to final adoption.

CARRIED

9.1.4 MONTHLY OPERATIONAL REPORT

RESOLUTION 070325

Moved: Cr Kylie Berryman
Seconded: Cr Gen Campbell

That the Monthly Operational Report as of February 2025 be received and the information noted by the Council.

CARRIED

MURRAY RIVER COUNCIL Ordinary Council Meeting Minutes

25 March 2025

9.1.5 RESOLUTIONS OF THE COUNCIL - RESOLUTION TRACKER & INFOCOUNCIL ACTION REPORTS**RESOLUTION 080325**

Moved: Cr Kylie Berryman

Seconded: Cr Bianca Hurn

That the Council resolve to receive and note the status of previous resolutions of Council (in open and closed Council) included the Resolution Tracker Reports.

CARRIED**9.1.6 2025 ANZAC DAY SERVICES****RESOLUTION 090325**

Moved: Cr Gen Campbell

Seconded: Cr Gary Pappin

That the Mayor, or his representative, attends the ANZAC Day Services in the towns of Barham/Koondrook, Mathoura, Moama, Moulamein, Piangil/Tooleybuc, Wakool and Echuca on Friday 25 April 2025, and lay a wreath on behalf of the Murray River Council community.

CARRIED

Councillors have indicated that they will be attending the following Wreath Laying services within Murray River Council.

Moama – Cr Bianca Hurn

Piangil/Tooleybuc – Cr Gary Pappin

Moulamein – Cr John Harvie

Mathoura – Cr Joy Allan

Barham/Koondrook – Cr Neil Gorey

Wakool – Cr Dennis Gleeson

Echuca – no delegate will be in attendance to this service as there has not been a response to the email sent.

9.2 DIRECTOR CORPORATE SERVICES REPORT AND SUPPLEMENTARY MATTERS**9.2.1 POLICY REVIEW - DRAFT CORPORATE CREDIT CARD POLICY****RECOMMENDATION**

That Murray River Council resolve to adopt the Corporate Credit Card Policy V#3, update the Policy Register and rescind any previous policies.

RESOLUTION 100325

Moved: Cr Gen Campbell

Seconded: Cr Bianca Hurn

age 4

MURRAY RIVER COUNCIL Ordinary Council Meeting Minutes**25 March 2025**

That this matter be deferred until the April Ordinary Meeting of Council

CARRIED**9.2.2 POLICY REVIEW - DRAFT FRAUD & CORRUPTION CONTROL POLICY V#3****RESOLUTION 110325**

Moved: Cr Dennis Gleeson

Seconded: Cr Neil Gorey

That Murray River Council (MRC) resolve to:

1. adopt the DRAFT Fraud and Corruption Control Policy V#3 and place the document on public display: and
2. receive the DRAFT Fraud and Corruption Control Framework V#1

CARRIED**9.2.3 FINANCIAL REPORT - UNAUDITED FY 24/25 PERIOD ENDING 28 FEBRUARY 2025****RESOLUTION 120325**

Moved: Cr Gen Campbell

Seconded: Cr Geoff Wise

That Murray River Council (Council) resolve to receive the Unaudited Financial Statements for the period to 28 February 2025 (FY2024/25), noting that reporting of monthly financial statements is not a regulatory requirement but nonetheless is being provided in furtherance of financial transparency and in keeping with financial reporting best practice.

CARRIED**9.2.4 MINUTES OF THE AUDIT, RISK AND IMPROVEMENT COMMITTEE (ARIC) MEETING HELD ON THE 3RD MARCH 2025****RESOLUTION 130325**

Moved: Cr Neil Gorey

Seconded: Cr Kylie Berryman

That the UNCONFIRMED Minutes of the Audit, Risk and Improvement Committee (ARIC) Meeting held on the 3rd March 2025 be received and the information noted by Council.

CARRIED**9.2.5 DRAFT DATA BREACH POLICY V#1****RESOLUTION 140325**

Moved: Cr Gary Pappin

Seconded: Cr Neil Gorey

That Murray River Council resolve to adopt the DRAFT Data Breach Policy V#1 and place the document on public display.

MURRAY RIVER COUNCIL Ordinary Council Meeting Minutes

25 March 2025

CARRIED

9.3 DIRECTOR INFRASTRUCTURE REPORT AND SUPPLEMENTARY MATTERS

9.3.1 TOWN LEVEE PROGRAM OF WORKS - INTERNAL FUNDING REALLOCATION

RESOLUTION 150325

Moved: Cr Gen Campbell

Seconded: Cr Gary Pappin

That Council approve the reallocation of \$50,000 from capital to operational expenditure in the 2024/25 financial year for the purpose of town levee operational activities.

In Favour: Crs John Harvie, Neil Gorey, Joy Allan, Dennis Gleeson and Geoff Wise

Against: Crs Kylie Berryman, Gen Campbell, Bianca Hurn and Gary Pappin

CARRIED 5/4

CARRIED

9.4 DIRECTOR PLANNING AND ENVIRONMENT REPORT AND SUPPLEMENTARY MATTERS

Nil

9.5 DIRECTOR COMMUNITY AND ECONOMIC DEVELOPMENT REPORT AND SUPPLEMENTARY MATTERS

9.5.1 MURRAY RIVER COUNCIL COMMUNITY GRANTS PROGRAM - APPOINTMENT OF ASSESSMENT PANEL, ROUND 2, FY25

RESOLUTION 160325

Moved: Cr Bianca Hurn

Seconded: Cr Neil Gorey

That Council:

1. Appoint three (3) Councillors to the Murray River Council *Community Grants Program Assessment Panel* to assess applications under Round 2, FY25 during the week beginning 14 April 2025.
2. Endorse the Chief Executive Officer, or their delegate, as a member of the Murray River Council *Community Grants Program Assessment Panel*.

CARRIED

Councillors Hurn, Gorey & Berryman have nominated for a position on the assessment panel.

Alternative councillors – Cr Allan and Cr Gleeson

MURRAY RIVER COUNCIL Ordinary Council Meeting Minutes25 March 2025

9.5.2 ADOPTION OF MRC'S COMMUNITY FINANCIAL ASSISTANCE PROGRAM FRAMEWORK (FY26)**RESOLUTION 170325**

Moved: Cr Kylie Berryman

Seconded: Cr Joy Allan

That Council adopt the Community Financial Assistance Program Framework (FY26).

CARRIED**9.5.3 MATHOURA RETIREMENT VILLAGE - SIGNED DELEGATION DOCUMENT****RESOLUTION 180325**

Moved: Cr Neil Gorey

Seconded: Cr Bianca Hurn

That Council receive and note the delegation document signed by the Mathoura Retirement Village Committee.

CARRIED**9.5.4 SECTION 355 COMMITTEE MEETING MINUTES AS AT FEBRUARY 2025****RESOLUTION 190325**

Moved: Cr Bianca Hurn

Seconded: Cr Gary Pappin

That Council receive and note the February Section 355 Committee Report.

CARRIED**9.5.5 POLICY REVIEW - DRAFT COMMUNITY FINANCIAL ASSISTANCE POLICY V#4****RESOLUTION 200325**

Moved: Cr Neil Gorey

Seconded: Cr Geoff Wise

That Council adopt the DRAFT Community Financial Assistance Policy V#4 and place the document on public display.

CARRIED**9.6 CORRESPONDENCE REPORT****9.6.1 CORRESPONDENCE REPORT****RESOLUTION 210325**

Moved: Cr Geoff Wise

age 7

MURRAY RIVER COUNCIL Ordinary Council Meeting Minutes

25 March 2025

Seconded: Cr Dennis Gleeson

That the Correspondence Report be received and the information noted by the Council.

CARRIED

9.7 SUNDRY DELEGATES REPORT

9.7.1 SUNDRY DELEGATES REPORT

RESOLUTION 220325

Moved: Cr Bianca Hurn

Seconded: Cr Kylie Berryman

That the Sundry Delegates Report of the Mayor and Councillors for the period 1 February 2025 through to 28 February 2025 be received and the information noted by the Council; and reasonable out of pocket expenses be met by Council.

CARRIED

Cr Kylie Berryman reported on her attendance at the following meetings and functions:

17 Feb: Councillor workshop

17 Feb: Botanical Gardens committee meeting morning tea and Mathoura Hall Committee meeting.

18 Feb: Mathoura Retirement Units Committee meeting.

24 Feb: CEO Selection Meeting.

25 Feb: Ordinary Meeting of Council

26 Feb: Council Budget Meeting

Cr Gen Campbell reported on her attendance at the following meetings and functions:

11 Feb: Councillor workshop

17 Feb: Botanical Gardens committee meeting morning

24 Feb: CEO Selection Meeting.

25 Feb: Ordinary Meeting of Council

26 Feb: Council Budget Meeting

At 2:13 pm, Cr Bianca Hurn left the meeting.

At 2:16 pm, Cr Bianca Hurn returned to the meeting.

At 2:20 pm, Cr Dennis Gleeson left the meeting.

At 2:22 pm, Cr Dennis Gleeson returned to the meeting.

10 NOTICE OF MOTIONS/QUESTIONS WITH NOTICE

10.1 NOTICE OF MOTION - STATUS OF COUNCIL'S GRAVEL PITS

RESOLUTION 230325

Moved: Cr Dennis Gleeson

age 8

MURRAY RIVER COUNCIL Ordinary Council Meeting Minutes

25 March 2025

Seconded: Cr Neil Gorey

That Council receive and note the Officers Response to the following question:

1. What is the current status of Council's gravel pits, including details on any pits that have been closed or are in the process of closing, along with the reasons for their closure?

CARRIED

10.2 NOTICE OF MOTION - DEVELOPMENT WITHIN THE SW REZ**RESOLUTION 240325**

Moved: Cr Geoff Wise

Seconded: Cr Dennis Gleeson

That Council receive and note the Officers Response to the following questions:

1. Does Council have an adopted policy regarding development within prime, productive agricultural land; and
2. Does the State Environmental Planning Policy (SEPP) Primary Production and Rural Development 2019 allow/enable development associated with the South West Renewable Energy Zone (SW Rez), particularly near Kyalite.

CARRIED

10.3 NOTICE OF RESCISSION - CONFIRMATION OF MINUTES - ORDINARY MEETING HELD ON 28 JANUARY 2025**RESOLUTION 250325**

Moved: Cr Gen Campbell

Seconded: Cr Gary Pappin

That Council resolve to:

1. Rescind Resolution 020225 of the February 2025 Council Meeting which sought to amend the Minutes of the January Meeting;
2. Note that Resolution 180225 can stand; and
3. Amend Item 3 of Resolution 250125 adopted at the Ordinary Meeting of Council held on 28 January 2025 by removing the words 'up to a maximum of' and will read as follows:

Subject to the completion of the public notice period and consideration of any submissions received, Council resolved to reimburse the Preschool for its operational maintenance costs for the year 2024, the amount of \$14,925.05 including GST. This decision is made in good faith and does not alter or cancel any other terms of the lease or contribution agreement between the parties.

CARRIED

11 CONFIDENTIAL MATTERS**RESOLUTION 260325**

Moved: Cr Kylie Berryman

age 9

MURRAY RIVER COUNCIL Ordinary Council Meeting Minutes

25 March 2025

Seconded: Cr Gary Pappin

That Council moves out of Open Council into Closed Council at 2:45pm.

CARRIED

RECOMMENDATION

That Council considers the confidential report(s) listed below in a meeting closed to the public in accordance with Section 10A(2) of the Local Government Act 1993:

11.1 Recommendation to Endorse Project Option - Barham River Estate Levee

This matter is considered to be confidential under Section 10A(2) - c of the Local Government Act, and the Council is satisfied that discussion of this matter in an open meeting would, on balance, be contrary to the public interest as it deals with information that would, if disclosed, confer a commercial advantage on a person with whom the Council is conducting (or proposes to conduct) business.

11.2 Credit Against Water Notice

This matter is considered to be confidential under Section 10A(2) - a of the Local Government Act, and the Council is satisfied that discussion of this matter in an open meeting would, on balance, be contrary to the public interest as it deals with personnel matters concerning particular individuals (other than councillors).

11.3 Contracts for Cloud Infrastructure and Microsoft 365 Licensing

This matter is considered to be confidential under Section 10A(2) - d(i) of the Local Government Act, and the Council is satisfied that discussion of this matter in an open meeting would, on balance, be contrary to the public interest as it deals with commercial information of a confidential nature that would, if disclosed prejudice the commercial position of the person who supplied it.

11.4 Kyalite Road Widening Pavement Material

This matter is considered to be confidential under Section 10A(2) - d(i) of the Local Government Act, and the Council is satisfied that discussion of this matter in an open meeting would, on balance, be contrary to the public interest as it deals with commercial information of a confidential nature that would, if disclosed prejudice the commercial position of the person who supplied it.

11.5 Variation Approval - Contract MRC 2104 - Replacement of Four Timber Bridges

This matter is considered to be confidential under Section 10A(2) - c of the Local Government Act, and the Council is satisfied that discussion of this matter in an open meeting would, on balance, be contrary to the public interest as it deals with information that would, if disclosed, confer a commercial advantage on a person with whom the Council is conducting (or proposes to conduct) business.

RESOLUTION 330325

Moved: Cr Gary Pappin

Seconded: Cr Kylie Berryman

That Council moves out of Closed Council into Open Council at 3:47pm.

CARRIED

MURRAY RIVER COUNCIL Ordinary Council Meeting Minutes

25 March 2025

RESOLUTION 340325

Moved: Cr Gary Pappin
Seconded: Cr Kylie Berryman

That Council brings forward the resolutions from Closed Council into Open Council and these be read aloud.

CARRIED

At 2:55 pm, Cr Dennis Gleeson left the meeting.

11.1 RECOMMENDATION TO ENDORSE PROJECT OPTION - BARHAM RIVER ESTATE LEVEE**MOTION**

Moved: Cr Kylie Berryman
Seconded: Cr Geoff Wise

That Council:

1. Receive the information contained in this report regarding the Barham River Estate Levee Upgrade Project; and
2. Endorse Option B to undertake the project in a staged approach, with Stage 1 to be completed within the existing approved budget.
3. Approves submission of a grant funding application to the Floodplain Management Program, seeking funding for the remaining works with a 6:1 funding ratio, noting that this will require additional Council funding of up to \$500,000 in a future financial year.

MOTION WAS LOST

RESOLUTION 270325

Moved: Cr Gen Campbell
Seconded: Cr Gary Pappin

That Council:

- a. defer this matter until the Barham flood study is completed and presented to Council
- b. seek legal advice in relation to Councils liability in relation to a potential flood event

CARRIED

At 3:18 pm, Cr Dennis Gleeson returned to the meeting.

At 3:18 pm, Cr Gen Campbell left the meeting.

11.2 CREDIT AGAINST WATER NOTICE**RESOLUTION 280325**

Moved: Cr Kylie Berryman
Seconded: Cr Bianca Hurn

That Murray River Council (Council) resolve to credit \$4,203.10 to the Water Account of the property identified in the report, owned by the person(s) also identified in the report, as the amount

age 11

MURRAY RIVER COUNCIL Ordinary Council Meeting Minutes

25 March 2025

contained in the initial Water Notice for the period July to October 2024 was incorrect due to a meter malfunction.

CARRIED**11.3 CONTRACTS FOR CLOUD INFRASTRUCTURE AND MICROSOFT 365 LICENSING****RESOLUTION 290325**

Moved: Cr Kylie Berryman

Seconded: Cr Geoff Wise

That Murray River Council resolve to authorise the Chief Executive Officer (CEO) to enter into and sign the following commercial contracts, ending in April/May 2027.

1. Contract for Infrastructure as a Service (IaaS) with Centorrino Technologies, and a
2. Contract for Microsoft 365 Licensing with Centorrino Technologies.

CARRIED**11.4 KYALITE ROAD WIDENING PAVEMENT MATERIAL****RESOLUTION 300325**

Moved: Cr Neil Gorey

Seconded: Cr Dennis Gleeson

That Council:

1. Accepts the quote submitted by Mawsons Concrete & Quarries for the supply of quarry materials to use in the pavement construction of Stage 1 of Kyalite Road between Ch 9.08 – 11.08km for a total cost of \$320,667.38 (inc. GST) for the 2024/25 program.
2. Authorises the CEO to execute the contract and any associated documentation, including approval for a Purchase Order for the Contract value.
3. Delegate authority to the CEO to approve variations to the contract provided such variations (when reviewed on a cumulative basis) are within the allocated project budget.

CARRIED**11.5 VARIATION APPROVAL - CONTRACT MRC 2104 - REPLACEMENT OF FOUR TIMBER BRIDGES****RESOLUTION 310325**

Moved: Cr Dennis Gleeson

Seconded: Cr Neil Gorey

That Council receive and note the information contained in this Report; and

1. That Council approve the variation of \$118,600 to Contract MRC 2104 Replacement of Four Timber Bridges in relation to Tooranie Road/Yarrein Creek Bridge; and
2. That Council acknowledge the accumulative expenditure to date under Contract MRC 2104 – Replacement of Four Timber Bridges totalling \$4,449,992.48 excl. GST; and

age 12

MURRAY RIVER COUNCIL Ordinary Council Meeting Minutes

25 March 2025

3. That Council approve the Chief Executive Officer to amend the Contract and Purchase Order amount with Murray Constructions Pty Ltd to \$4,568,592.48 excl. GST and authorise any further contract variations within budget; and
4. Authorise Daniel Hughes, Interim Director – Infrastructure to act as Contract Superintendent for the contract.

CARRIED**11.6 BARHAM MICRO ABATTOIR - RECOVERY OF RECTIFICATION COSTS****RESOLUTION 320325**

Moved: Cr Kylie Berryman

Seconded: Cr Gary Pappin

That Council considers the detail of this report and resolves to delegate authority to the Acting Chief Executive Officer to:

1. instruct external Counsel in accordance with the recommendations made in their letter of advice (as detailed in this report); and
2. negotiate, execute, and sign all necessary documentation, including the Settlement Deed and mortgage documentation, to finalise the settlement on terms consistent with the recommendations.

CARRIED**12 CONCLUSION OF MEETING**

THERE BEING NO FURTHER BUSINESS, THE MEETING CLOSED AT 3:54pm.

The next Ordinary Meeting of Murray River Council will be held on Tuesday 22 April 2025, commencing at 1:00 PM, in Council Chambers, Moama Administration Office, 52 Perricoota Road, Moama.

THESE MINUTES ARE SIGNED AS A TRUE AND ACCURATE RECORD OF THE PROCEEDINGS OF THE ORDINARY MEETING OF THE MURRAY RIVER COUNCIL HELD ON 25 MARCH 2025, IN ACCORDANCE WITH A RESOLUTION OF THE COUNCIL ON 22 APRIL 2025.

.....
MAYOR.....
CEO

5 DISCLOSURES OF INTERESTS

6 REPORTS TO COUNCIL

6.1 CHIEF EXECUTIVE OFFICERS REPORT AND SUPPLEMENTARY MATTERS**6.1.1 ADOPTION OF DELIVERY PROGRAM 2025-29**

File Number: -

Author: Zoe Croft, Manager Community Engagement

Authoriser: Stacy Williams, Chief Executive Officer

RECOMMENDATION

That the Officer's report on Adoption of Delivery Program 2025-29 as at 29 April 2025 be received and the Delivery Program 2025-29 be adopted by the Council.

DISCUSSION

Council's Delivery Program 2025-29 has been on public exhibition for the required 28-day exhibition period and during this time received 4 submissions.

The submissions received consisted of

Business Unit Managers

- Request to extend timeframes for the Developer Contributions Plan and the Complaint Management document suite.
- Additional strategies and frameworks to be developed relating to Water, Sewer, Stormwater, Flood Management, Work Health and Safety and Wellbeing.

Community

- No submissions were received.

Councillors

- No submissions were received.

The items suggested by Business Unit Managers are reasonable and practical and have been incorporated into the final Delivery Program.

Ideas previously submitted during the public exhibition period of the Community Strategic Plan 2025-35 have been taken into consideration and included where practicable.

Suggestions related to

- various advocacy projects (Covid-19 vaccine and consequences, State and Federal Government grant application increases, Swan Hill bridge project) which will be addressed in coming years,
- installation of splash parks (will be addressed during the development of the Aquatics Strategy),
- upgrades to various buildings (will be addressed via the Building Strategy and Master Plans),

- Town Water Management (will be address via the Integrated Water Cycle Management project),
- renewable energy opportunities (will be addressed via supporting locally generated renewable energy projects),
- increasing opportunities for affordable housing (will be addressed during the development of the local Housing Strategy),
- increasing information sharing about healthy eating, food security, physical activity and open spaces and health information across the region (will be addressed via the Support health Promotion strategies across the region),
- various Master Plans for townships to be undertaken (will be undertaken in line with priority listings and funding opportunities)
- enhancing tourism at specific sites (will be addressed via master plans, township plans, economic development and tourism strategy),
- environmental projects such as a rural tree scheme (will be addressed via the development of the weed and vegetation management framework),
- increase in volunteer engagement (will be address via various volunteer group and S355 support projects),
- sealing various unsealed roads (will be addressed via the development of the Roads Strategy and Service Levels along with the Road Asset Management Plans),
- installation of bike education pathways for younger children (will be addressed via the Recreation Master Plans and the Parks and Open Space Strategy),
- upgrades to Moama Beach and Horseshoe lagoon to include bike and kayak access points (will be addressed via the Master Plans)
- operational hours of Council Front Counter Services (will be addressed via the Customer Service Strategy and Service Level agreements project).

Some minor amendments were made within the Delivery Program to accommodate the projects and programs of works identified during the consultation period.

ATTACHMENTS

1. Delivery Program 2024-25 (under separate cover)

6.2 DIRECTOR CORPORATE SERVICES REPORT AND SUPPLEMENTARY MATTERS

Nil

6.3 DIRECTOR INFRASTRUCTURE REPORT AND SUPPLEMENTARY MATTERS**6.3.1 RECOMMENDATION FOR PLACING THE DRAFT MOAMA FLOOD RISK MANAGEMENT STUDY AND PLAN ON PUBLIC EXHIBITION****File Number:** -**Author:** Matthew Sherman, Acting Manager - Project Management Office**Authoriser:** Daniel Hughes, Interim Director Infrastructure**RECOMMENDATION**

That Council resolve to place the Draft Moama Flood Risk Management Study and Plan on Public Display for a period of 28 days for public consultation and comment.

BACKGROUND

Campaspe Shire and Murray River Councils were allocated funding by their respective State Governments to conduct flood studies to update flood information for Echuca and Moama, focussing on the urban and growth areas affected by riverine flooding. The North Central Catchment Management Authority (NCCMA) was also allocated funding for a flood study of the Torrumbarry section of the Murray River to establish the value of levee banks in that area. In November 2017 both Councils and the NCCMA resolved to undertake a joint flood study lead by Campaspe Shire Council involving the Murray River from Barmah to downstream of Torrumbarry together with the lower reaches of the Goulburn and Campaspe Rivers.

The project comprises two components:

1. The Flood Study (refer to Attachment 1) which models behaviour of the flood plain in its current state of development under the standard 'design' events (i.e. 20%, 10%, 5%, 2%, 1%, 0.5% and 0.2% Annual Exceedance Probability (AEP) events and Probable Maximum Flood event) in terms of extents, depths and risks posed by those events. This report was exhibited and adopted by both Councils in March-April 2024.
2. The Flood Plain Risk Management Study and Plan to which this report relates. It assesses and recommends various mitigation options including physical works, development controls and flood warning systems and provides important intelligence for responding agencies. The Risk Management Plan comprises separate NSW and Victorian documents relating to Murray River Council and Campaspe Shire Council respectively due to differing State requirements but are similar in intent.

This project has been undertaken in accordance with the Victorian Flood Plain Management Strategy, NSW Floodplain Management Program and associated State guidelines. A Community Reference Committee was established specifically for the project and wider community input has been openly sought throughout the project including extensive consultation with the broader community seeking details of flood prone locations and suggestions for mitigation works to supplement those identified by the flood engineers.

DISCUSSION

The Draft Moama Flood Risk Management Study and Plan (MFRMS&P) follows on from the Echuca Moama Flood Study (EMFS). A copy of the MFRMS&P and supporting Appendix is included in Attachments 2 and 3. The flood study developed the computer models to enable modelling and documenting of existing flood plain behaviour. The MFRMS&P investigates and documents how the associated risks from riverine flooding may be best managed. Management of those risks is broadly classified into mitigation works (town levees, etc), development controls based on the hazards from

flooding, improved flood warnings and provision of information for the Flood Emergency Management Plan so that responding agencies are better informed.

The MFRMS&P was prepared in parallel to the Echuca Flood Risk Management Study and Plan with all proposed mitigation works jointly modelled to ensure no cross-border impacts and proposed works do not negatively impact others.

Preparation of the MFRMS&P commenced with broad community consultation and a series of drop-in sessions for agencies and community members to suggest and discuss locations and types of mitigation works. Improvements to information and communications were also offered to reduce flooding impacts and improve responses. The Community Reference Committee was expanded to include members of the community who offered suggestions, and the flood engineers worked in consultation with that Committee to test and develop the recommended mitigation works. Works investigated included all options suggested by the community and those identified by the flood engineers.

The resulting set of levee systems enjoyed strong support from all involved with issues around the precise location and type of levees to be determined later.

An assessment of peak flood surfaces for the 20% AEP up to the Probable Maximum Flood (PMF) against surveyed and estimated floor levels for Moama township was made assuming only existing reliable permanent levees. A summary of the analysis is shown below as related to gauge levels at Echuca Wharf.

Table 6-3 Property Consequence Summary for Moama

Modelled Flood Level at Gauge (mAHD)	Flood Event	Inundated Above Floor Level	Inundated Above Ground Level
93.75	20% AEP	5	12
94.40	10% AEP	60	308
94.88	5% AEP	368	554
95.30	2% AEP	1,691	1,873
95.48	1% AEP	1,805	1,965
95.74	0.5% AEP	1,854	1,966
96.10	0.2% AEP	2,212	2,363
97.20	Extreme Flood	5,110	5,201

The MFRMS&P provides a benefit / cost assessment for each levee and as a combined flood protection system; Benefits are measured in terms of reduced flood damage versus costs in terms of initial capital and ongoing maintenance costs. The benefit-cost ratio is a standard financial measure applied by governments as part of their prioritisation of funding applications.

A benefit/cost ratio less than 1.0 indicates the costs to construct and maintain the infrastructure are more than the accumulated savings in damages when the time value of money is considered. It has limited consideration of the associated social impacts. A benefit/cost ratio of 1.0 or more represents the benefits of the recommended solution outweighing the costs.

The MFRMS&P does not detail the precise location, type of levee or funding mechanism. It only provides costs based on typical levee types and general location. The levee detail is to be determined during functional design in close consultation with benefiting property owners.

Summary of Potential Flood Modification Measures

A summary of the potential flood modification measures from the MFRMS&P is as follows:

FM01 – New levee installation along Murray River behind Tindarra Resort. Provision for a temporary levee to be incorporated in the Moama Town Levee Owner's Manual until the finalisation of the permanent levee is complete.

FM02 – Upgrade the Moama Town Levee to provide freeboard that is currently lacking. 0.8m freeboard for earthen sections and 0.59m of freeboard for concrete sections.

FM03 – Council reviews the condition and adequacy of their stormwater drainage system, including pumps, and values/gates to prevent back flooding from the river.

FM04 – Installation of permanent pumps at Chanter Street

Further details are provided below on recommended levee works.

Tindarra Levee along Murray River (FM01)

To prevent flood flows along the depression near to the Tindarra Resort in flood events greater than or equal to a 1% AEP event, a relatively long and continuous levee would be required. A suggested concept alignment of the levee is shown in Figure 5-1. The levee would need to be designed by a qualified engineer and signed off for compaction testing and final inspection after construction to ensure the levee stability.

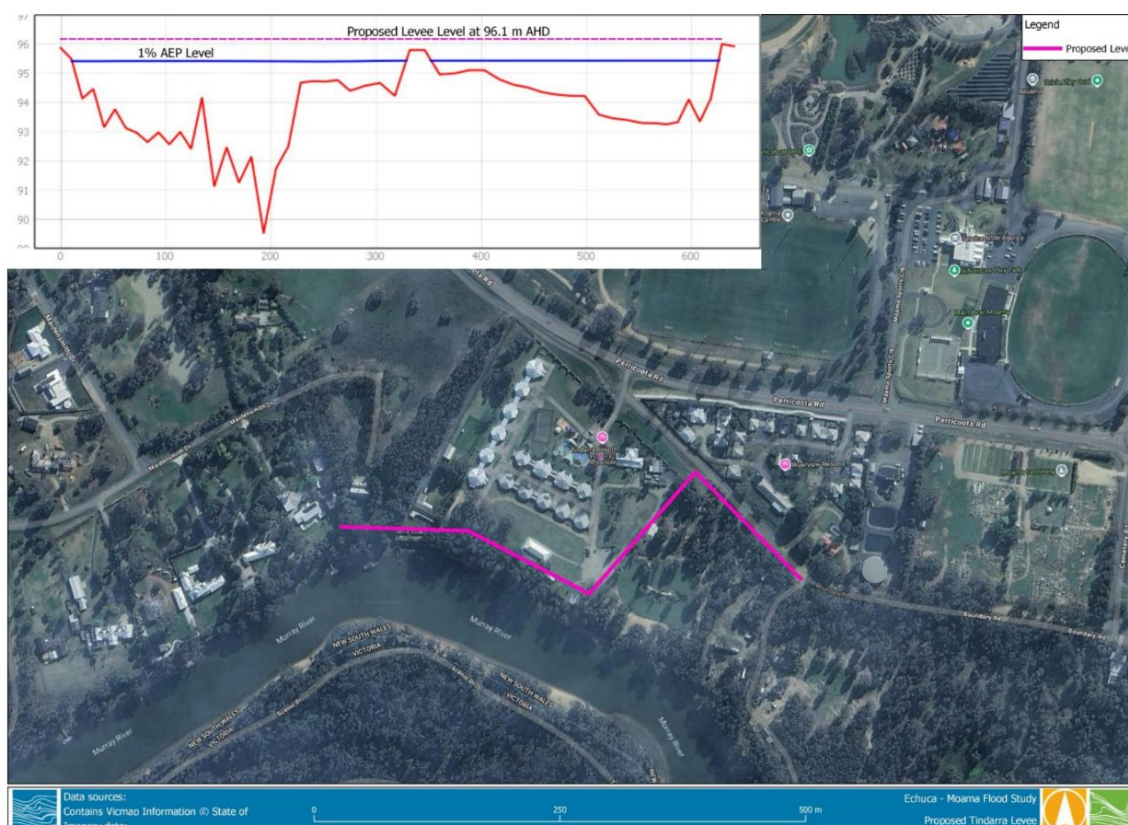


Figure 5-1 Tindarra Resort Levee Alignment

Upgrades to Moama Town Levee (FM02)

The levee for the Moama township was included in the design events modelled as part of the Echuca-Moama Flood Study (2024), and it was assumed that the levee did not breach before flood levels overtopped its crest level. The results of the flood study modelling indicated that the standard freeboard required of an urban levee was not afforded, and therefore an upgrade of the levee crest should be considered.

The proposed improvement works for the Moama township levee is to increase the height of the levee crest to provide appropriate freeboard above the 1% AEP flood level along the whole length of the levee. Earthen sections of the levee will need to be designed by a qualified engineer and

signed off for compaction testing and final inspection after construction to ensure the levee stability. Concrete sections of the levee will need to be designed by a qualified structural engineer and signed off for final inspection after construction.

Recommended Changes to Land Use Planning

Land use planning is an effective measure to prevent intensification of flood risk, directing appropriate use of land in flood prone areas, commensurate with the level of flood risk. This is largely controlled by Council through the Local Environmental Plan (LEP) and Development Control Plan (DCP). The current plans in place for Moama date back to the previous Murray Shire Council.

The MFRMS&P identified the following changes to planning measures as outlined in Section 7 – Property Modification Measures.

PM01 – The flood planning constraint categories presented in Section 7.1 of this report be implemented, to guide land use planning decisions.

PM02 – Clause 5.22 Special Flood Considerations of the current LEP should be abandoned.

PM03 – Private landholders with dwellings below the design flood level and outside of the township, in areas where levee solutions have not been proposed, investigate their own private levees to protect their dwelling.

Public Consultation

It is proposed to seek community comment on the Draft MFRMS&P via community consultation prior to its submission for adoption by Council. This should ensure all relevant issues have been considered and any affected persons have opportunity to seek review of any aspects or deficiencies they consider require further investigation. A summary of issues raised in all submissions with associated recommendations will be presented to Council when the report is resubmitted for Council to consider its adoption in June 2025.

It is proposed that the Draft MFRMS&P be listed on public display for a period of 28 days and be made available online for viewing and comment. Hard copies will also be made available at the Moama Council Office (52 Perricoota Road) with submission forms for collecting feedback.

STRATEGIC IMPLICATIONS

3. Strategic Theme 3: A place of Liveable Communities

3.11 - Strategic planning which produces consistent, strategic, transparent outcomes - Town Planning / Land Use Strategies

BUDGETARY IMPLICATIONS

The project is funded from existing grant funds and Council budget allocations. The MFRMS&P recommendations do not commit Council to implementation of those recommendations or associated expenditure. There are no financial or resource implications in adopting this report.

POLICY IMPLICATIONS

Nil.

LEGISLATIVE IMPLICATIONS

RISK ANALYSIS

- **What can happen?**

Flood Risk Exposure: The MFRMS&P has identified potential mitigation approaches to reduce the risks identified in the Echuca Moama Floody Study (2024). Failure to adopt the MFRMS&P will leave Council exposed to flood inundation resulting in potential damages.

Community Consultation: As highlighted in the report discussion, its it critical that the community has the ability review the information and issues highlighted in the MFRMS&P to ensure that all issues and information has been considered.

Grant Funding Deadlines: The MFRMS&P must be completed by 31 July 2025. Council adoption of the Draft at the 29 April 2025 extraordinary meeting will enable sufficient time to gather feedback and incorporate identified items into the final MFRMS&P. Failure to achieve this timeline may result in financial implications.

- **How can it happen?**

Failure to adopt or delayed adoption of the Draft MFRMS&P will trigger the identified risks.

- **What are the consequences of the event happening?**

Flood Risk Exposure – please refer to the attached MFRMS&P outlining consequences of inundation.

Financial implications – If Council does not meet funding deadlines, it may be required to repay components of the financial assistance received.

Stakeholder Dissatisfaction – It is critical that community members have the opportunity to review and comment on the risk mitigation measures identified in the plan. Feedback will ensure all information is considered before adopting the final plan.

- **What is the likelihood of the event happening?**

Please refer to the attached MFRMS&P outlining likelihood of the events and impacted properties.

- **Adequacy of existing controls?**

The process in place to complete the MFRMS&P is adequate to address the identified risks.

- **Treatment options to mitigate the risk?**

Endorsement of the Draft MFRMS&P and commence 28 days public consultation.

CONCLUSION

The Draft Moama Flood Risk Management Study and Plan outlines recommendations for flood mitigation works, development controls and measures to improve flood warning systems to assist responding agencies in riverine flooding events. The measures identified in the Draft have the potential to reduce the flood risk and associated costs of damage from riverine flood events in Moama. The Draft Moama Flood Risk Management Study and Plan is recommended to proceed to community consultation to ensure all aspects have been considered before its adoption.

ATTACHMENTS

1. **Attachment 1 - Echuca Moama Flood Study June 2024 (under separate cover)**
2. **Attachment 2 - Draft Moama Flood Risk Management Study and Plan - April 2025 (under separate cover)**
3. **Attachment 3 - Appendix A to the Draft MFRMS&P**

OFFICIAL

FLOOD INTELLIGENCE CARD – MURRAY RIVER @ ECHUCA (Echuca Wharf)

Version 1 – May 2024

Note: flood intelligence records are approximations. This is because no two floods at a location, even if they peak at the same height, will have identical impacts. Flood intelligence cards detail the relationship between flood magnitude and flood consequences. More details about flood intelligence and its use can be found in the Australian Emergency Management Manuals flood series.

This Flood Intelligence Card publication is presented by the NSW State Emergency Service for the purpose of disseminating emergency management information. The contents of the information have not been independently verified by the Victoria State Emergency Service. No liability is accepted for any damage, loss or injury caused by errors or omissions in this information or for any action taken by any person in reliance upon it. Scan the QR code for the current levels for this gauge.



LOCATION:	Moama
CURRENT LEVEL:	
STREAM:	Murray River @ Echuca (Echuca Wharf)
GAUGE NUMBER:	409200 / 574000
GAUGE ZERO:	N/A
GAUGE TYPE:	Stream level


MAP REFERENCE:	
MINOR FLOOD LEVEL:	93.5 mAHD
MODERATE FLOOD LEVEL:	93.9 mAHD
MAJOR FLOOD LEVEL:	94.4 mAHD
Moama Town LEVEE HEIGHT:	96.15 mAHD
HIGHEST RECORDED FLOOD:	96.2 mAHD (1870)

Gauge Height (mAHD)	Flood Class or Annual Exceedance Probability (% AEP)	Expected Flooding and Consequences	Actions
91.32		Water enters stormwater pipe of the Moama Levee at Chainage 3,952.	Close floodgate
92.85	January 2011 flood	Event Summary This was predominately a Campaspe River flood that caused some backing up of the Murray River. Flooding occurred in parts of Echuca to the west of the Campaspe River and to the east of the Campaspe River south of the Murray Valley Highway.	
93.40		Chanter Street Culvert invert level	
93.41	October 2016		
93.75	Minor Flood Level (20% AEP)	Properties Likely Impacted - 12 properties inundated, including 5 above floor level. <ul style="list-style-type: none"> Properties inundated above floor level at Old Deniliquin Road, 60 Meninya Street, 69 Dungula Road, 69 Edward Street Southern end of Dungula Highway (Edward Street) Community Infrastructure Likely Impacted <ul style="list-style-type: none"> Moama Local Aboriginal Land Council Moama Dental Clinic Essential Infrastructure Likely Impacted <ul style="list-style-type: none"> Levee overtops on the Old Deniliquin Road near Webb Road 	

Municipal Flood Emergency Plan for Mitchell Shire Council– Version 1 May 2024

- 1 -

OFFICIAL

Gauge Height (mAHD)	Flood Class or Annual Exceedance Probability (% AEP)	Expected Flooding and Consequences	Actions
		Tourism / Recreation Likely Impacted <ul style="list-style-type: none"> Dungula Events Centre, Tasman Holiday Parks Access to Moama on Murray Houseboats is cutoff Moama Skate Park Roads Flooded <ul style="list-style-type: none"> Chanter Street, Deniliquin Street, Gregory Road, Barmah Road, Old Deniliquin Road, Old Barmah Road, Louies Hut Road, Blair Street and Moama Street. Event Summary In east Moama floodwater overtops the levee on the Old Deniliquin Road near Webb Road. Floodwater spreads further south and impacts properties in east Moama and inundation extends to Gregory Road. On the Barmah Road, flood water passes Louies Hut Road and spreads further south. Flood water is contained within the Murray River near Moama Waters. Floodplain to the east of the railway line fills with floodwater flowing under the railway line at the Black Bridge. A portion of Old Deniliquin Road is inundated in the north.	
94.27	August 1981		
94.40	Major Flood Level 10% AEP Event 	Properties Likely Impacted - 308 properties inundated, including 60 above floor level. <ul style="list-style-type: none"> Belt Street, Deniliquin Street, Chanter Street, Warden Street and Council Street Essential Infrastructure Likely Impacted <ul style="list-style-type: none"> Residential and rural area at the eastern end of Chanter Street becomes isolated Tourism / Recreation Likely Impacted <ul style="list-style-type: none"> Coco Bend Caravan Park The southern section of the Discovery Parks – Moama Waters Tasman Holiday Park Moama Riverside Holiday Park becomes partially inundated Roads Flooded <ul style="list-style-type: none"> Council Street, Warden Street, Winall Street and Victoria Street Event Summary In east Moama, flood water overtops Milgate Road and then heads south, inundating east Moama. Water level in the Murray River near Moama Waters is below the bank for the northern portion of the site, while the southern portion is inundated.	
94.52	1974 Flood		
94.58	1956 Flood		
94.62		Overtopping of road at Chanter Street Culvert	
94.75	October 1975 Flood		
94.77	October 1993 Flood		
94.80	1916 Flood		
94.88	5% AEP	Properties Likely Impacted - 554 properties inundated, including 368 above floor level.	

OFFICIAL

Gauge Height (mAHD)	Flood Class or Annual Exceedance Probability (% AEP)	Expected Flooding and Consequences	Actions
		<ul style="list-style-type: none"> Victoria Street, Chanter Street and Belt Street Community Infrastructure Likely Impacted <ul style="list-style-type: none"> Farmland in Moama East Tourism / Recreation Likely Impacted <ul style="list-style-type: none"> Murray River Holiday Park, Madison Spa Motel Discovery Parks Maidens Inn, Moama completely inundated Roads Flooded <ul style="list-style-type: none"> Belt Street Event Summary In Moama East there is widespread flooding from the Murray River, flood water moves south through the culvert on the railway line and the area between Holmes Road and Chanter Street is fully inundated. Properties at the intersection of Cobb Highway and Meninya Street are partially affected. The flood water moves south through the culvert on the railway line and the area between Holmes Street and Chanter Street are now fully inundated.	
94.99	October 2022		
95.20		Underside of Black Bridge	
95.3	2% AEP	Properties Likely Impacted – 1,873 Properties inundated, including 1,691 above floor level. <ul style="list-style-type: none"> East side of Barnes Road, Moama Street, properties on Charters Drive become isolated. Tourism / Recreation Likely Impacted <ul style="list-style-type: none"> Tindarra Resort, Roads Flooded <ul style="list-style-type: none"> Perricoota Road, Carters Drive Event Summary The properties on the corner of Holmes Road and Moama Street are inundated and the lots which were flood free in 5% AEP are now flooded. To the west of Moama, near Perricoota Road, floodwaters breakout from the Murray River and spreads through Tindarra Resort.	
95.35	1867 flood		
95.4		Underside of Moama Rail Bridge 1	Construct temporary flood levee at the Rail Crossing of the Moama Levee
95.45			Construct temporary flood levee at the levee low point of the Moama Levee
95.48	1% AEP	Properties Likely Impacted - 1,965 Properties inundated, including 1,805 above floor level. <ul style="list-style-type: none"> Charters Drive, Lignum Road, Community Infrastructure Likely Impacted <ul style="list-style-type: none"> Cob Haven Over 50s Community in the south-west corner near Racecourse Lane Essential Infrastructure Likely Impacted <ul style="list-style-type: none"> Underside of Moama Rail Bridge 2 Tourism / Recreation Likely Impacted N/A	
		Roads Flooded	

OFFICIAL

Gauge Height (mAHD)	Flood Class or Annual Exceedance Probability (% AEP)	Expected Flooding and Consequences	Actions
		<ul style="list-style-type: none"> Lignum Road, west of Charters Drive Event Summary The north and east of Moama are completely inundated. With the limited freeboard for the Moama town levee at this design flood height that the integrity of the levee is not guaranteed. The flood water from Perricoota Road breakout spreads further north up to Rich River Golf club. A flow breakout from the bend in the Murray River at Tindarra Resort forms and travels along a depression. Recent residential development along Pericoota Road blocks the flow from extending beyond Chardonnay Avenue.	
95.49			Construct temporary flood levee at the Chanter Street low point of the Moama Levee
95.74	0.5% AEP	Properties Likely Impacted – 1,966 Properties inundated, including 1,854 above floor level. <ul style="list-style-type: none"> Kiely Road, Shetland Drive, Falkirk Way, Airdrie Court, Hudson Court, Ogden Court, Kildare Avenue, Glencoe Boulevard, Morton Court, Dumfries Court, Dundee Court, Harris Court, Callander Court and Argyle Court. Community Infrastructure Likely Impacted <ul style="list-style-type: none"> Goodstart Early Learning Moama Essential Infrastructure Likely Impacted N/A Tourism / Recreation Likely Impacted N/A Roads Flooded <ul style="list-style-type: none"> Antrim Court, Kildare Avenue, Hayley Court, Odgen Court, Skye Avenue, Greytown Court, Essential Infrastructure Likely Impacted <ul style="list-style-type: none"> Black Bridge overtopped Event Summary The north and east Moama is fully submerged with similar extent to 1% AEP with level increasing slightly. Moama Town Levee breaches and inundates north Moama. Flows north of Perricoota Road are contained primarily within drainage reserves constructed as part of recent residential development.	
95.85		Moama Rail Bridge 2 overtopped	
96.02			Construct temporary flood levee at the Barnes Road and Holmes Street low points of the Moama Levee
96.1	0.2% AEP	Properties Likely Impacted – 2,363 Properties inundated, including 2,212 above floor level. <ul style="list-style-type: none"> Marion Court, Mayflower Drive, Glencoe Boulevard, Stirling Court, Annie Court, The Mews, McLaren Drive, Barber Court, Olivia Drive, Maxwell Drive, Gardner Court, Hickey Drive, Bremer Court Warden Street, War Street, Dorward Place Community Infrastructure Likely Impacted <ul style="list-style-type: none"> Moama Industrial Estate Hickey Drive, Nicholas Drive and Graham Street Rich River Golf Club, Murray River Resort (east of Pericoota Road), Perricoota Vines Retreat Menarock Life Murrayvale Moama Aged Care Cobb Haven – Over 50s Lifestyle Community Moama and District Preschool Centre 	

OFFICIAL

Gauge Height (mAHD)	Flood Class or Annual Exceedance Probability (% AEP)	Expected Flooding and Consequences	Actions
		<ul style="list-style-type: none"> Moama Anglican Grammar Moama Public School Essential Infrastructure Likely Impacted <ul style="list-style-type: none"> Moama Rail Bridge 1 and Moama Town Levee overtopped Moama Railway Station Tourism / Recreation Likely Impacted <ul style="list-style-type: none"> Moama Swimming Pool, Echuca Moama Cycle Club Velodrome, Brick Alley Oval Roads Flooded <ul style="list-style-type: none"> Echuca Street, Eddy Avenue, Hickey Drive, Lea Court, Barber Court, Nicholas Drive, Maxwell Drive, Shaw Street, Warden Street and Simms Street. Event Summary The Rich River Golf Club is now affected by floodwater to the west of Moama. Floodwater overtops Martin Road and inundates the Murray River Resort east of Perricoota Road. The Perricoota Vines Retreat, further north along Perricoota Road near Twenty Four Lane is partially inundated.	
96.16			Construct temporary flood levee at the access road crossing of the Moama Levee
96.20	1870 flood		
97.2	Extreme Flood	Properties Likely Impacted – 5,201 Properties inundated, including 5,110 above floor level. Woolworths Moama and Moama RFS also affected. Widespread Inundation of Moama	
98		Underside of Murray River Bridge	

6.4 DIRECTOR PLANNING AND ENVIRONMENT REPORT AND SUPPLEMENTARY MATTERS

Nil

6.5 DIRECTOR COMMUNITY AND ECONOMIC DEVELOPMENT REPORT AND SUPPLEMENTARY MATTERS

Nil

6.6 CORRESPONDENCE REPORT

Nil

6.7 SUNDRY DELEGATES REPORT

Nil

7 CLOSE OF MEETING