

Using Sandbags To Protect Your Home

Floods can impact communities across the state at any time, there are a number of things that you can do to make sure you and your property stay safe during flooding.

For materials, contact your local hardware store.

How do I fill sandbags ?

- Only use sand to fill hessian bags. Do not use dirt.
- Only fill sandbag two-thirds full.
- Do not over fill the sandbag as it will be too heavy to carry.
- Do not tie the top of the sandbag.
- Take care when filling and lifting the sandbag, to avoid injury.



How do I lay sandbags ?

- Lay sandbags like brickwork. Stagger rows so that the joins do not line up.
- Start at one end and work to the other end.
- Ensure the unfilled part of the bag is covered by the next bag.
- Tuck flap under the bag at the end of the row.
- If the sandbag wall is going to be more than five (5) bags high, you will need to lay two (2) rows wide.

TIP: Flattening the top of the sandbag row before adding the next row will help the structure.

Step 1: Flap down



Step 2: Overlap



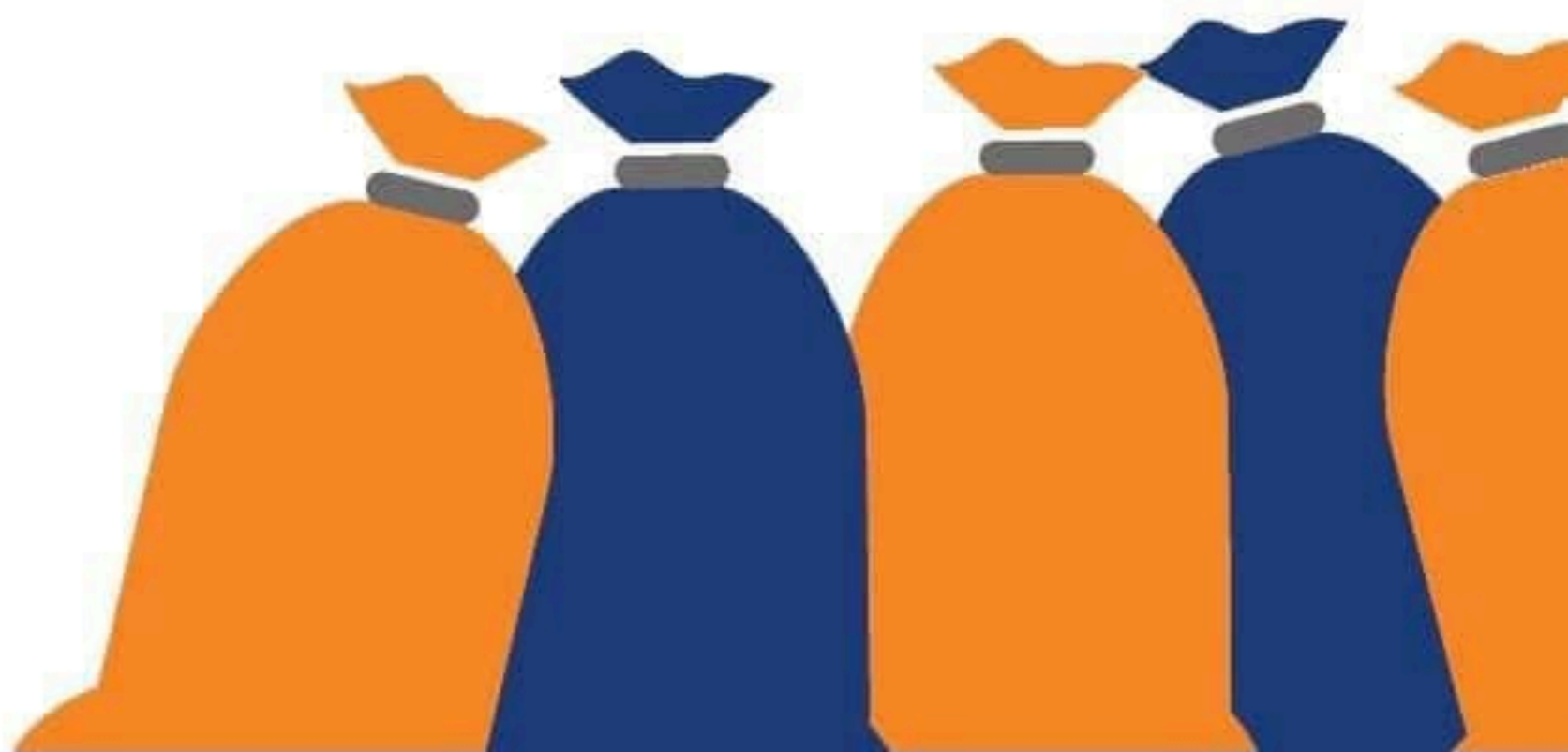
Where do I place the sandbags ?

- Cover drainage holes in home e.g. showers, toilets, sinks to stop back flow of water.
- Place a small wall across doorways, at least the height of the expected water level. Be careful not to trap yourself inside.
- If available, plastic sheeting may be used under sandbags to reduce the seepage.



What do I do once I have finished with the sandbags?

- Sturdy gloves should be worn when handling wet sandbags as they can contain chemicals, waste and diseases.
- Sandbags that have been in contact with floodwater need to be thrown away.
- Contact your local council to find out how to dispose of your sandbags safely.



FOR EMERGENCY ASSISTANCE IN
FLOOD, STORM AND TSUNAMI CALL

132 500