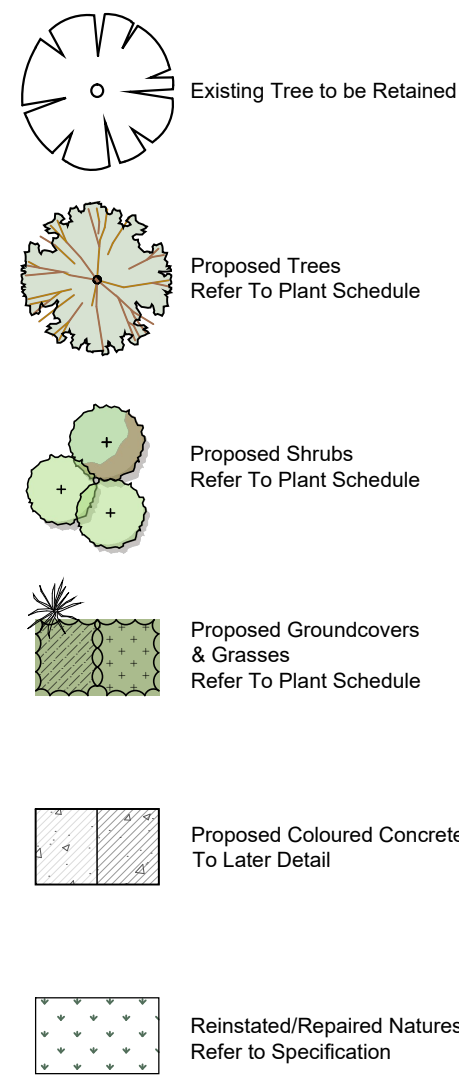


LEGEND



SPECIFICATION NOTES

Soil Preparation
Crushed rock, concrete spillage and any other material restrictive to plant growth (e.g. large rocks) shall be removed from the site of any planting beds and all semi-advanced trees. All trees to be removed shall be stump ground and all rubbish/vegetative spoil is to be removed from site. Existing top soil in planting areas is to be preserved so that it does not receive additional compaction from site machinery and so that no rubble or building supplies are stored in these areas.

No imported top soil is to be used within the root zones of trees to be protected. Any preparation of existing soil for planting within these areas is to be done by hand only. Holes (e.g. as the result of plant removal) and uneven soil levels may be patched using topsoil as specified below.

Any imported topsoil is to be free of weeds, rubble and other materials damaging to plant growth and is to be of a medium texture (sandy loam) with a pH of 6.0-7.0. Top soil is to be laid over a prepared sub-base which has had any materials damaging to plant growth (e.g. rubble and large rocks) removed, spread to the appropriate depth and cultivated into the existing site soil to a minimum depth of 150mm.

Imported top soil is to be lightly and uniformly compacted in 150mm layers to a minimum depth of 100mm on lawn areas and 300mm on excavated planting beds.

Weed Removal
All weeds shall be thoroughly removed. All vegetative material, including roots and rhizomes of non-woody perennials and woody suckering weeds, is to be removed or appropriately controlled using chemical means. The stumps of non-suckering woody perennials are to be stump ground. All vegetative material shall be appropriately disposed of off site in a manner which will not allow their re-establishment elsewhere. Any chemical controls are to be used in accordance with manufacturer's instructions and standard occupational health and safety procedures.

Care must be taken to ensure that all trees to be retained are not damaged during weed removal. This also implies that any herbicides used are suitable for use around the vegetation to be retained.

Planting
Planting shall be carried out using accepted horticultural practices with all plants conforming to the species, size and quantities indicated on the Landscape Plan and Plant Schedule. Plants shall be thoroughly soaked through immersion in water prior to planting and if the planting soil is very dry then the planting hole is also to be filled with water and allowed to drain completely.

All plants shall be appropriately hardened off in the nursery. Use plants with the following characteristics: Large healthy root systems with no evidence of root curl or pot bound restriction or damage, vigorous, well established, free from disease and pests and of good form, consistent with the species or variety.

Planting holes for shrubs and groundcovers are to be of minimum size 75mm larger than the planting pot in all directions. Semi-advanced tree planting holes are to be the same depth as the rootball and 2-3 times its diameter, with the top of the rootball being at grade. A 75mm high berm is to be constructed at edge of root-ball to hold

water. All plants are to be thoroughly watered after planting and slow release fertiliser added at the quantities specified by the manufacturer.

Mulch
Mulch is to be supplied to all garden beds and is to be an organic type laid to a minimum depth of 75mm, consisting of fine dark coloured chipped or shredded pine bark or hardwood with not more than 5% fines content by volume (preferably zero fines). The average size of the woodchip must be approximately 10mm x 20mm x 5mm and the maximum length is not to exceed 30mm. Mulch shall be free of damaging matter such as soil, weeds and sticks and is to be stockpiled and thoroughly weathered prior to delivery. Mulch is to be kept back 100mm from the stems of all plants to prevent collar rot.

Timber Edges
Provide 75 x 25mm treated pine edges to all borders between gravel mulch paths and garden beds using 75x25x300mm long treated pine stakes at 1200mm maximum centres. An additional stake is to be provided at joins in the plinth.

Irrigation
An approved drip irrigation system is to be supplied to all landscape areas. An approved pop-up spray system is to be supplied to all lawn areas. It is the responsibility of the contractor to ensure that all irrigation meets manufacturers specifications. The system is to be connected to mains supply and include a rain-shut off device. All dripline is to be buried with approx. 50mm of topsoil cover and shall be anchored at regular intervals to ensure the tubing cannot be dislodged.

Repair/Restoration of damaged Nature-strips
Nature strips are to be restored to current grades with any depressions filled with topsoil to specifications above and lightly compacted in 150mm layers. Areas are then to be re-seeded

using an appropriate and matching turf type and the area fenced off to allow the re-establishment of lawn. Re-seeded areas are to be well irrigated and the area supplied with a slow release fertiliser at the quantities recommended by the manufacturer.

Any areas of lawn which have failed to germinate (achieve an evenly green 95% covering of a consistent height) are to be re-seeded within one month of original sowing date.

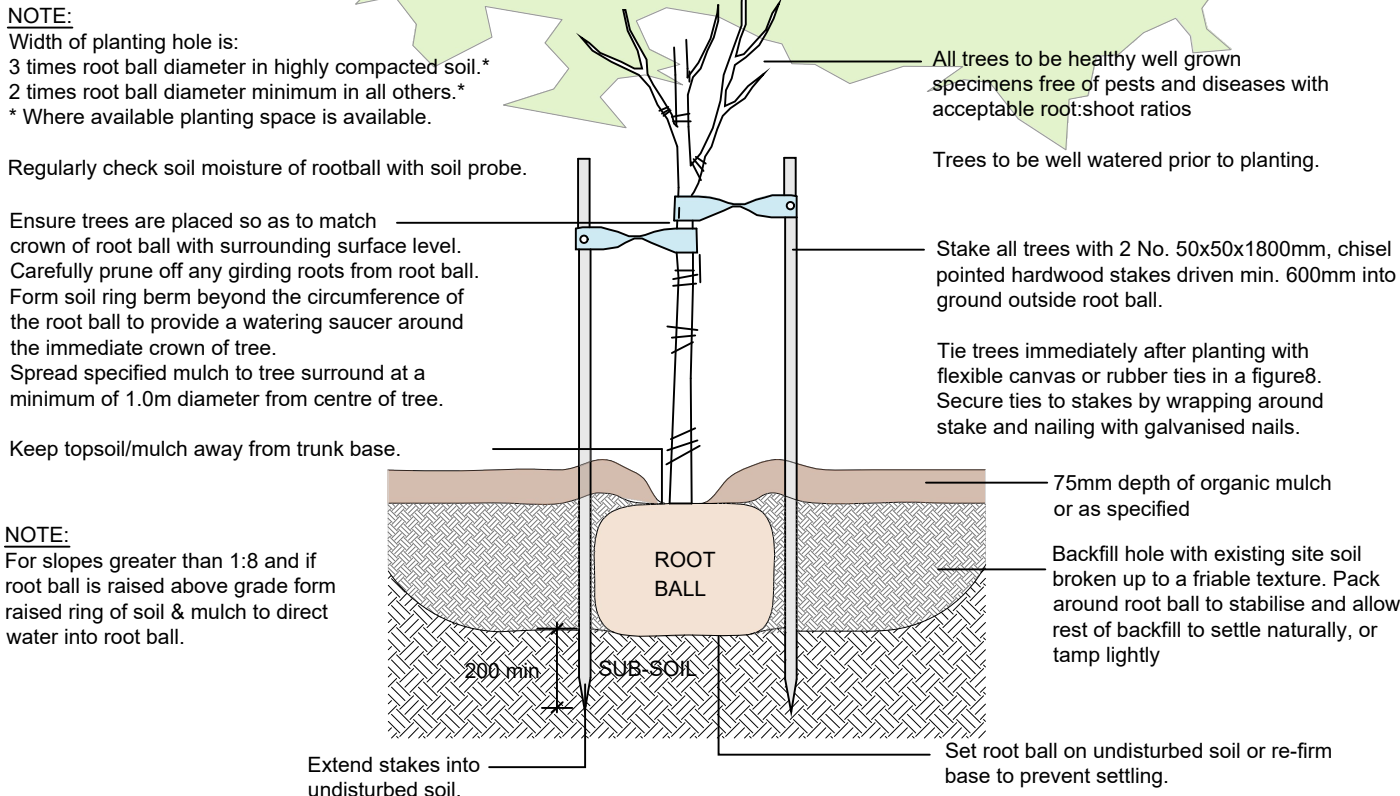
Plant Establishment Period
There shall be a 13 weeks Plant Establishment Period following the approval of Practical Completion by the responsible authority. During this period the landscape contractor shall make good all defects in his/her scope of works. Maintenance and Establishment means the care and maintenance of the contract area by accepted horticultural practices, as well as rectifying any defects that become apparent in the work under normal use. This shall include, but shall not be limited to watering, fertilising, weeding, pruning, pest and disease control, cultivation, re-staking and replacement of any plants that fail with plants of the same species and size.

PLANT SCHEDULE

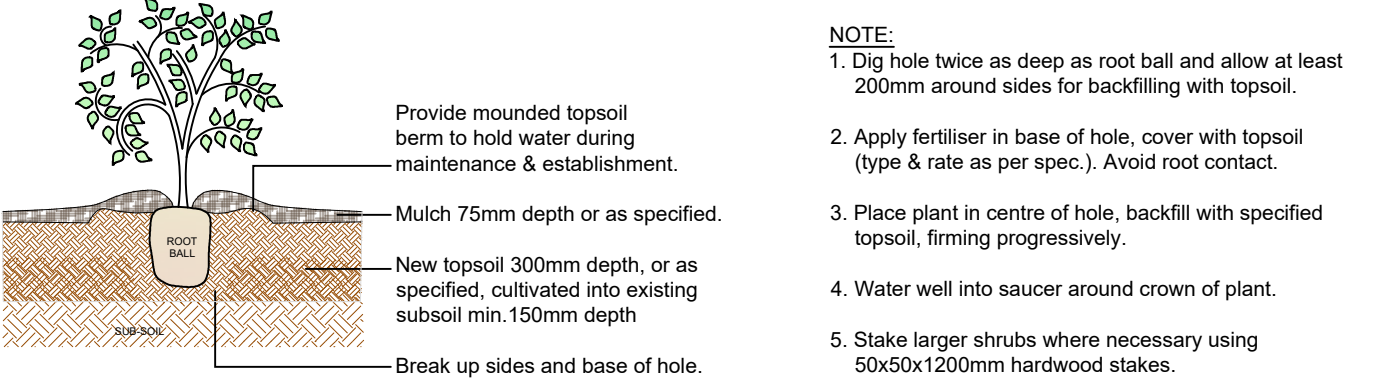
SYM	BOTANICAL NAME	COMMON NAME	D/EN*	HBGHT X WIDTH X MATURITY	MIN SUPPLY SIZE	QTY
TREES						
BJR	<i>Brachychiton acerifolius</i> 'x populneus' 'Jerilderie Red'	Jerilderie Red Brachychiton	EN	8 x 5m	50cm/2.0mH	6
TIL	<i>Tristania laurina</i> 'Luscious'	Luscious Kanooka/Water Gum	EN	9 x 5m	50cm/2.0mH	3
TOTAL						9
SHRUBS						
AcL	<i>Acacia cognata</i> 'Limeight'	Dwarf River Wattle 'Limeight'	EN	0.5-1 x 1m	200mm pot	
WBG	<i>Weepingia fruticosa</i> 'Blue Gem'	Blue Gem Coastal Rosemary	EN	1 x 1m	200mm pot	
TOTAL						
GROUNDCOVERS & GRASSES						
ABG	<i>Anigozanthos</i> 'Bush Gem'	Bush Gems Kangaroo Paw	EN	0.5 x 0.5m	140mm pot	
DrS	<i>Dianella revoluta</i> 'Seaspray'	Spreading Flax Lily	EN	0.75 x 0.75m	140mm pot	
LLT	<i>Lomandra</i> x 'Lime Tuff'	Lime Tuff Mat-rush	EN	0.4 x 0.4m	140mm pot	
TOTAL						

*D/E = Deciduous/Evergreen N/Ex = Native/Exotic

TYPICAL PLANTING DETAILS



D1 TYPICAL TREE PLANTING DETAIL Scale N.T.S.



D2 TYPICAL SHRUB PLANTING DETAIL Scale N.T.S.

COPYRIGHT
This drawing must not be copied in whole or in part without the consent of John Patrick Landscape Architects Pty Ltd
Do not scale off drawings

NOT_FOR_CONSTRUCTION

DRAFT

DATE: 07.06.2022

REVISION DATE BY

JOHN PATRICK LANDSCAPE ARCHITECTS PTY LTD
324 Victoria Street, Richmond, VIC 3121
T +61 3 9429 4855
F +61 3 9429 8211
admin@johnpatrick.com.au
www.johnpatrick.com.au

CLIENT
Lot 1 Perricoota Pty Ltd

PROJECT
PROPOSED RETAIL DEVELOPMENT

Lot 3, Boundary Road, Moama

DRAWING
Landscape Plan
for Town Planning

SCALE 1:100 @A1
DATE JUNE 2022
DRAWN SA
CHECKED JP
JOB NO 22-257
DWG NO L-TP01
CAD FILE 22-257-L.dwg

